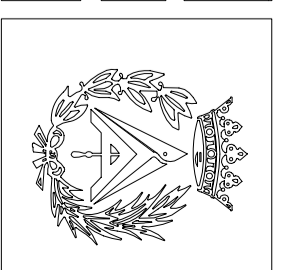
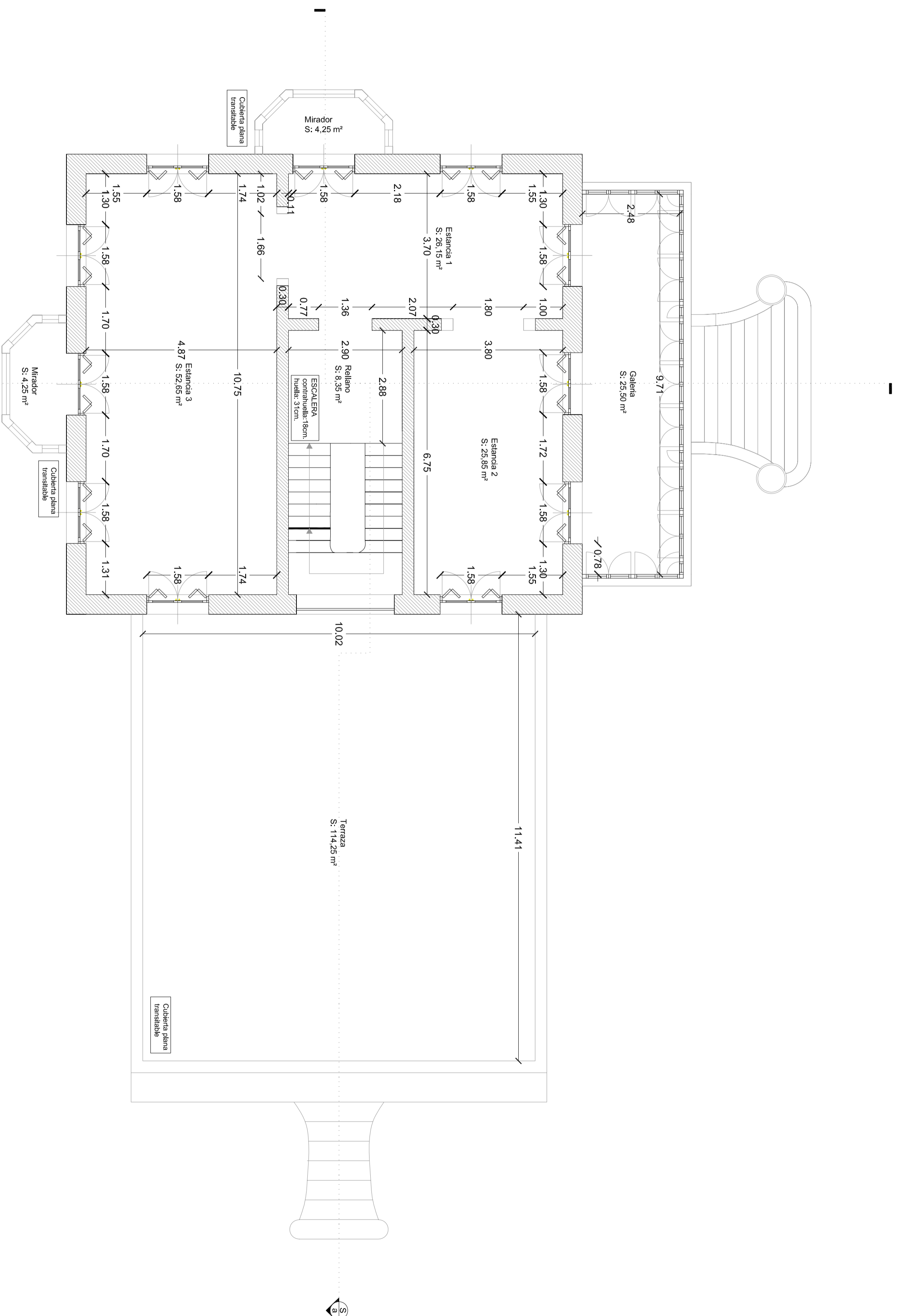


UPCT	DAVID NAVARRO MORENO	PLANO Nº	2
EDIFICIO	VILLA CALAMARI	FECHA	JUN/2007
PLANO	COTAS Y SUPERFICIES PLANTA BAJA	ESCALA	1/75

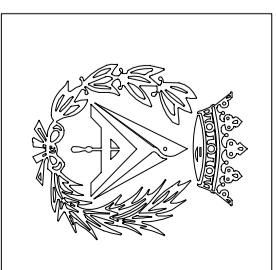


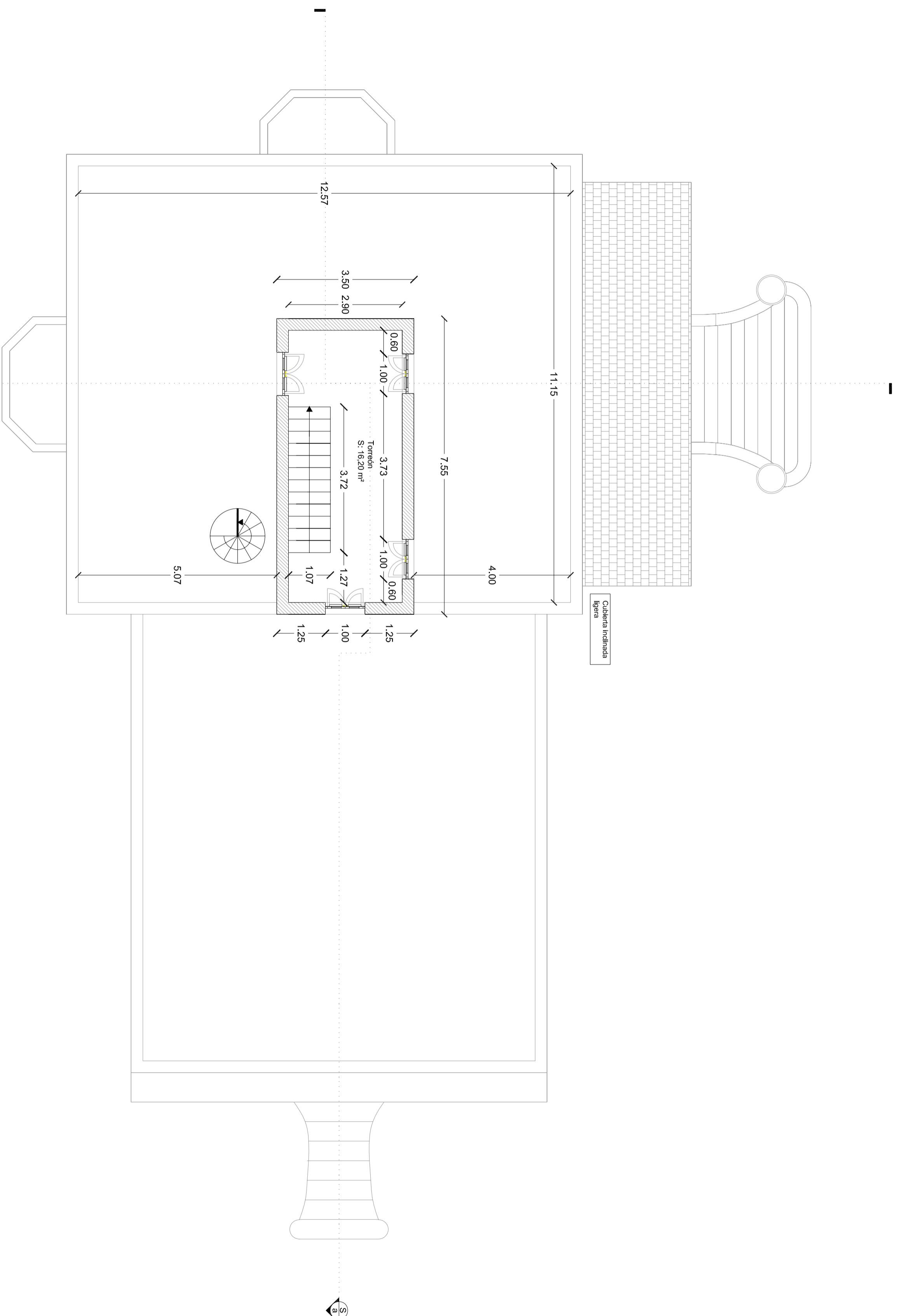


UPCT **DAVID NAVARRO MORENO** PLANO Nº **3**

EDIFICIO **VILLA CALAMARI** FECHA **JUN/2007**

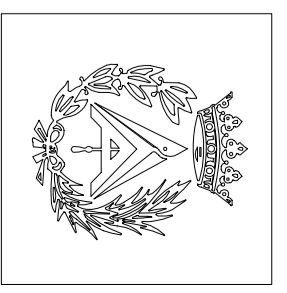
PLANO **COTAS Y SUPERFICIES PLANTA PRIMERA** ESCALA **1/75**

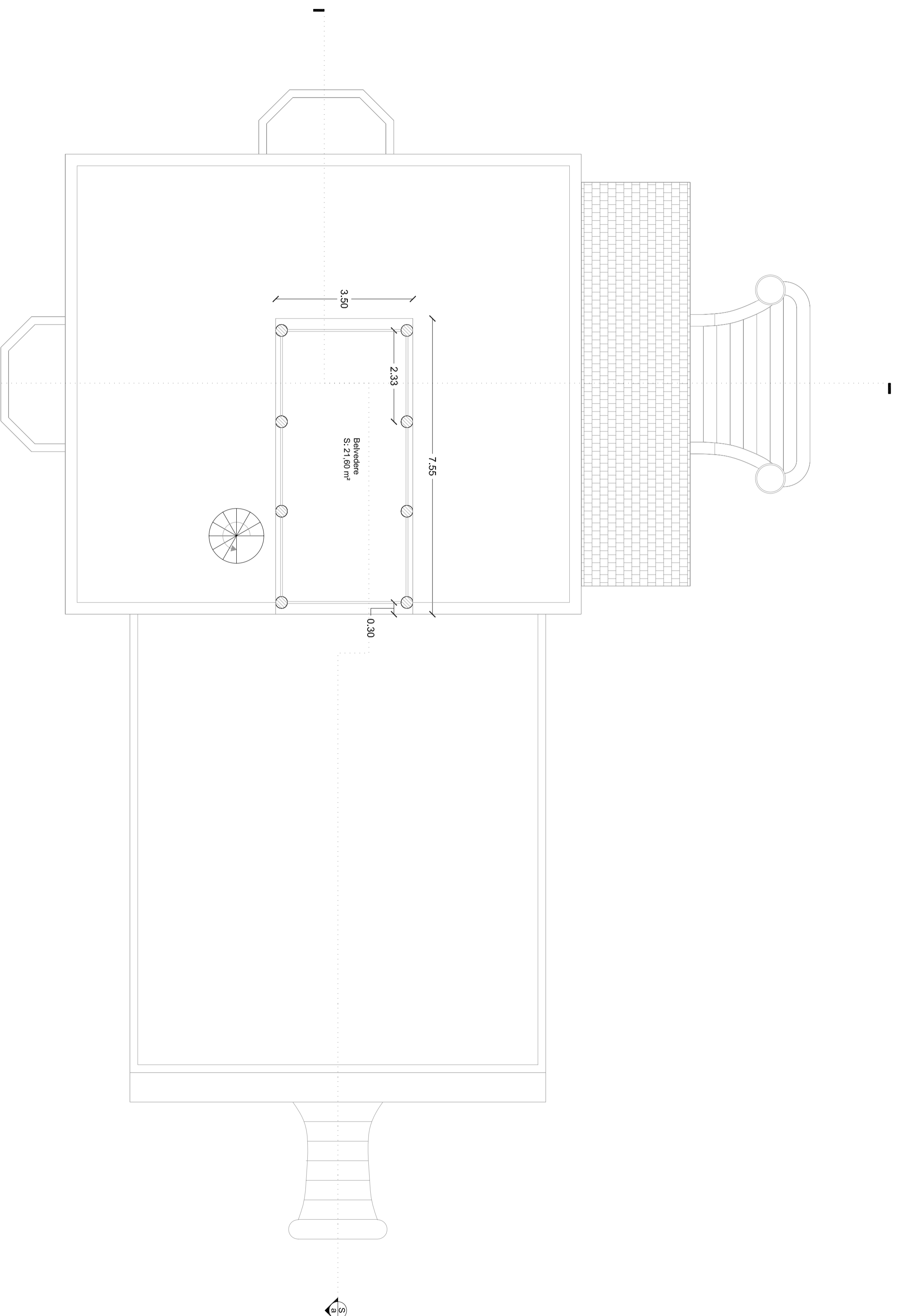




Cubierta inclinada ligera

UPCT	DAVID NAVARRO MORENO	PLANO Nº	4
EDIFICIO	VILLA CALAMARI	FECHA	JUN/2007
PLANO	COTAS Y SUPERFICIES PLANTA TERCERA	ESCALA	1/75





UPCT **DAVID NAVARRO MORENO**

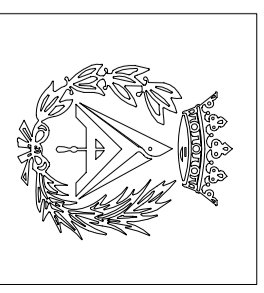
PLANO Nº **5**

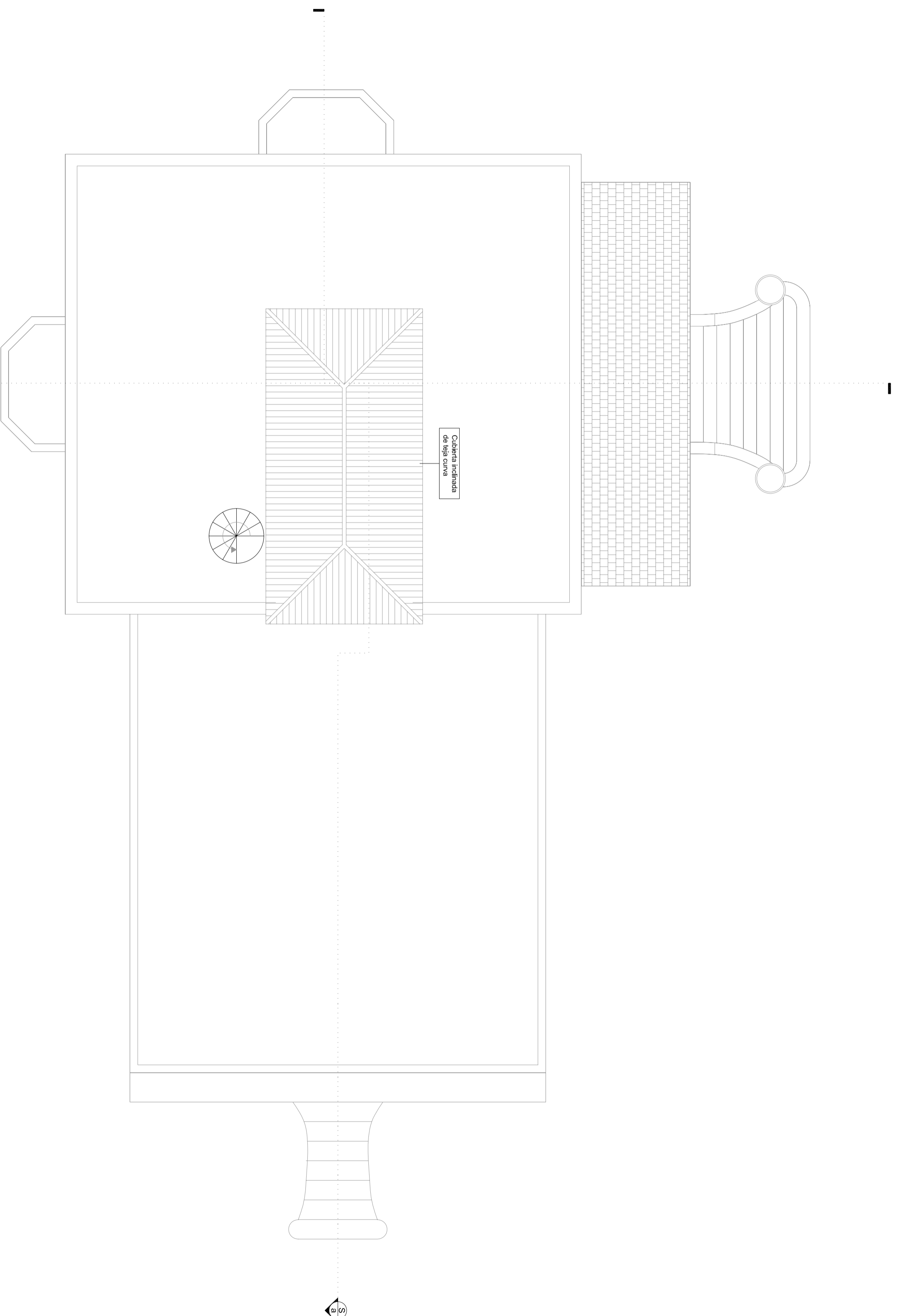
EDIFICIO **VILLA CALAMARI**

FECHA **JUN/2007**

PLANO **COTAS Y SUPERFICIES PLANTA CUARTA**

ESCALA **1/75**





UPCT **DAVID NAVARRO MORENO**

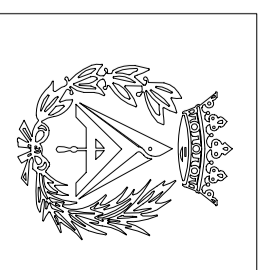
PLANO Nº **6**

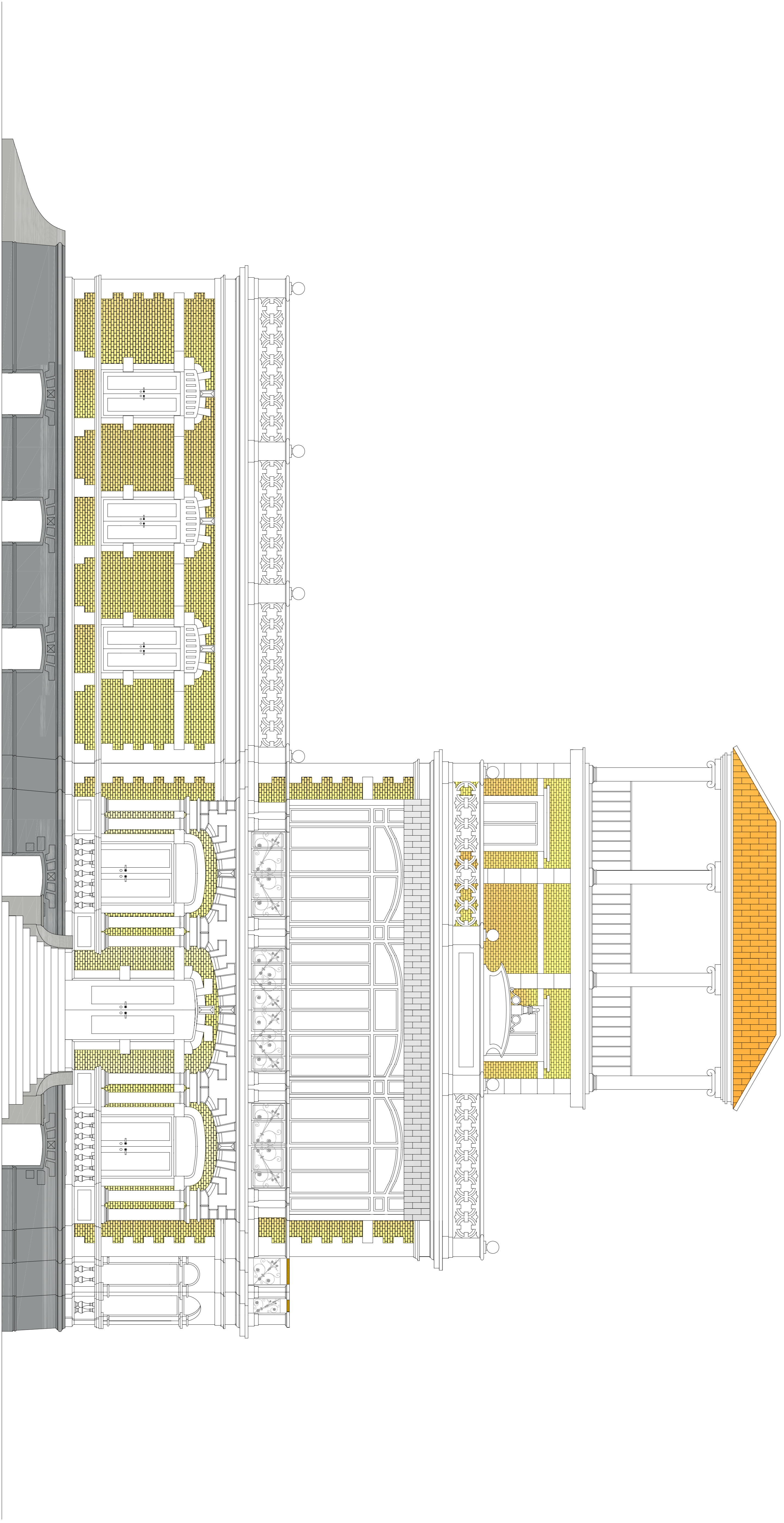
EDIFICIO **VILLA CALAMARI**

FECHA **JUN/2007**

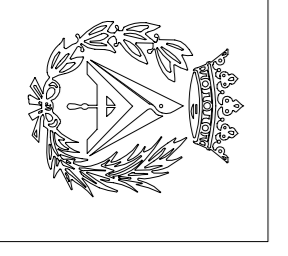
PLANO **COTAS Y SUPERFICIES PLANTA CUBIERTAS**

ESCALA **1/75**



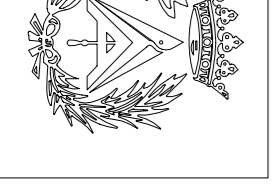


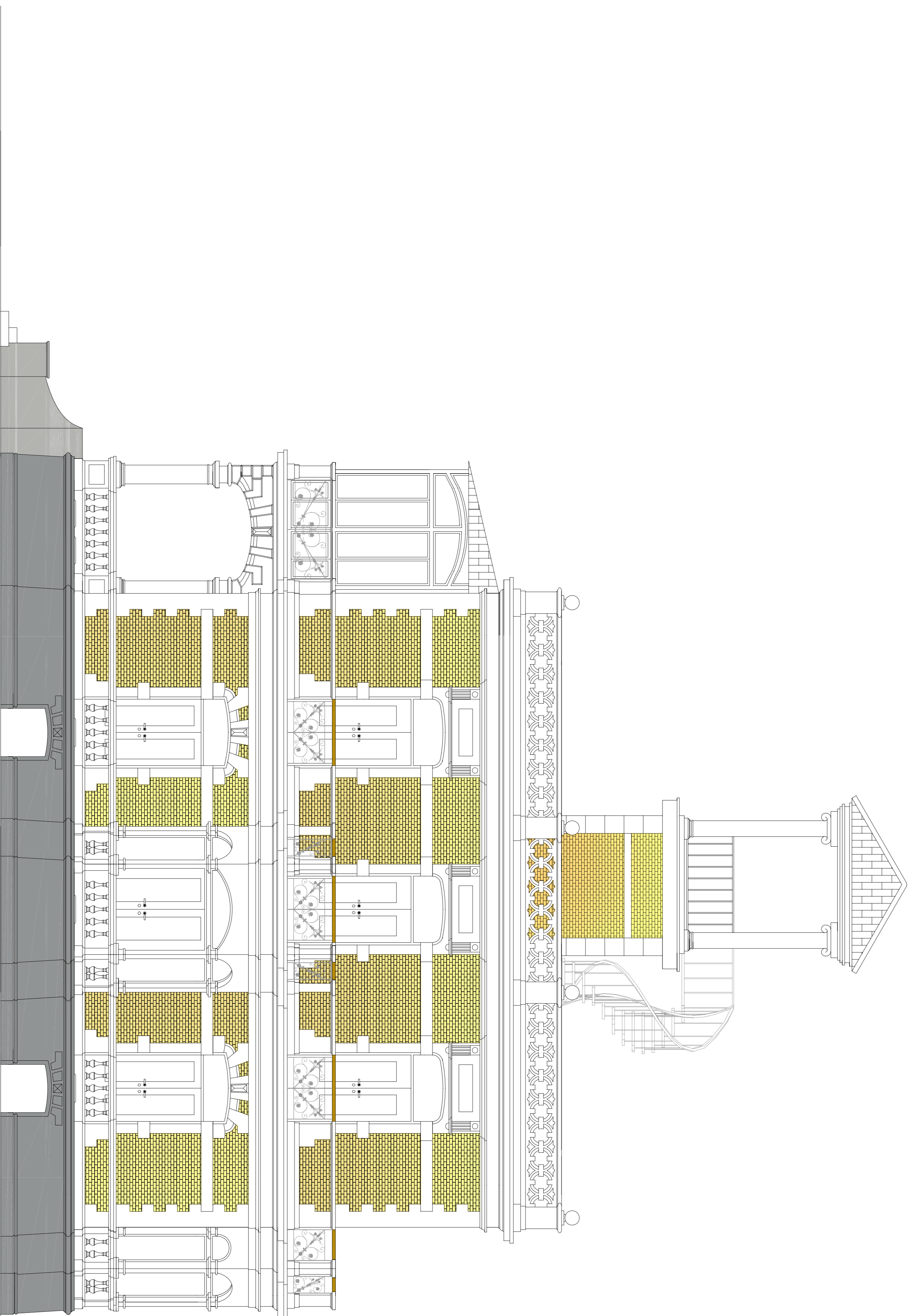
UPCT	DAVID NAVARRO MORENO	PLANO Nº	7
EDIFICIO	VILLA CALAMARI	FECHA	JUN/2007
PLANO	ALZADO ESTE	ESCALA	1/50



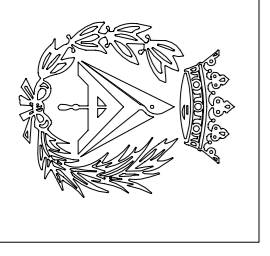


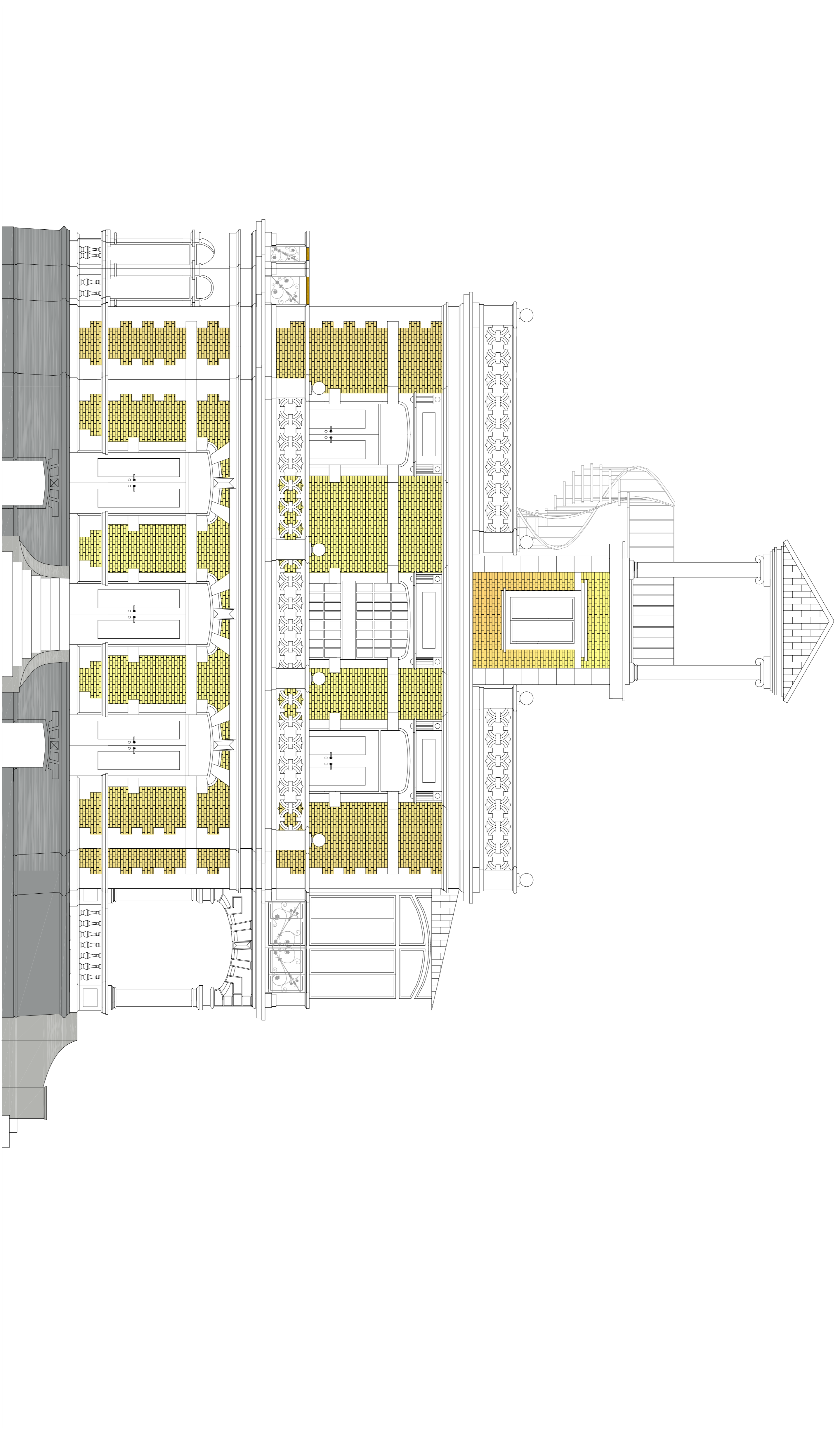
UPCT	DAVID NAVARRO MORENO	PLANO Nº	8
EDIFICIO	VILLA CALAMARI	FECHA	JUN/2007
PLANO	ALZADO OESTE	ESCALA	1/50



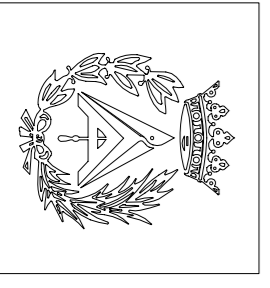


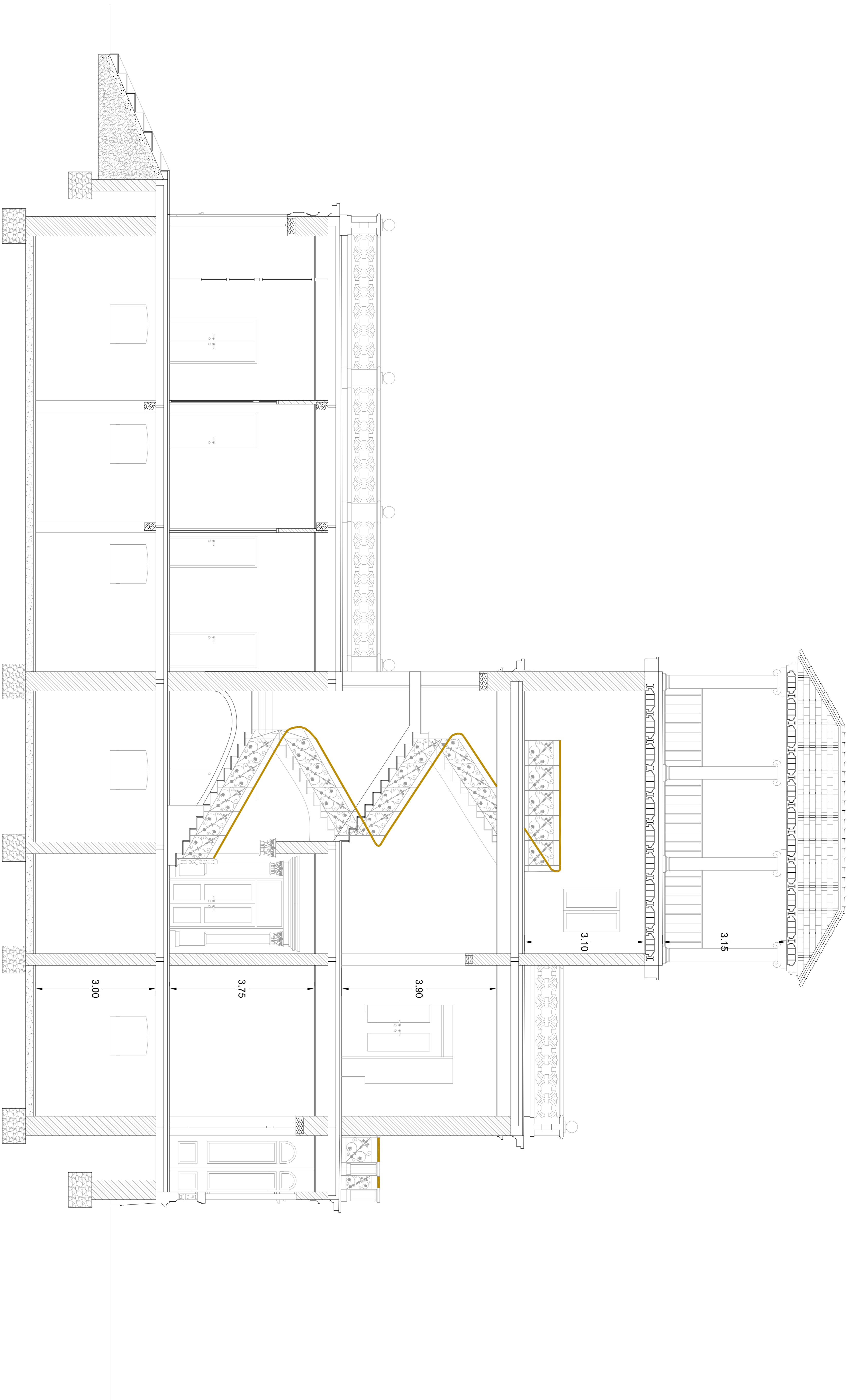
UPCT	DAVID NAVARRO MORENO	PLANO Nº	9
EDIFICIO	VILLA CALAMARI	FECHA	JUN/2007
PLANO	ALZADO NORTE	ESCALA	1/50



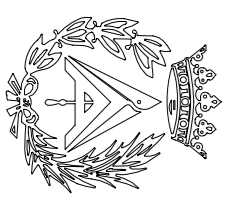


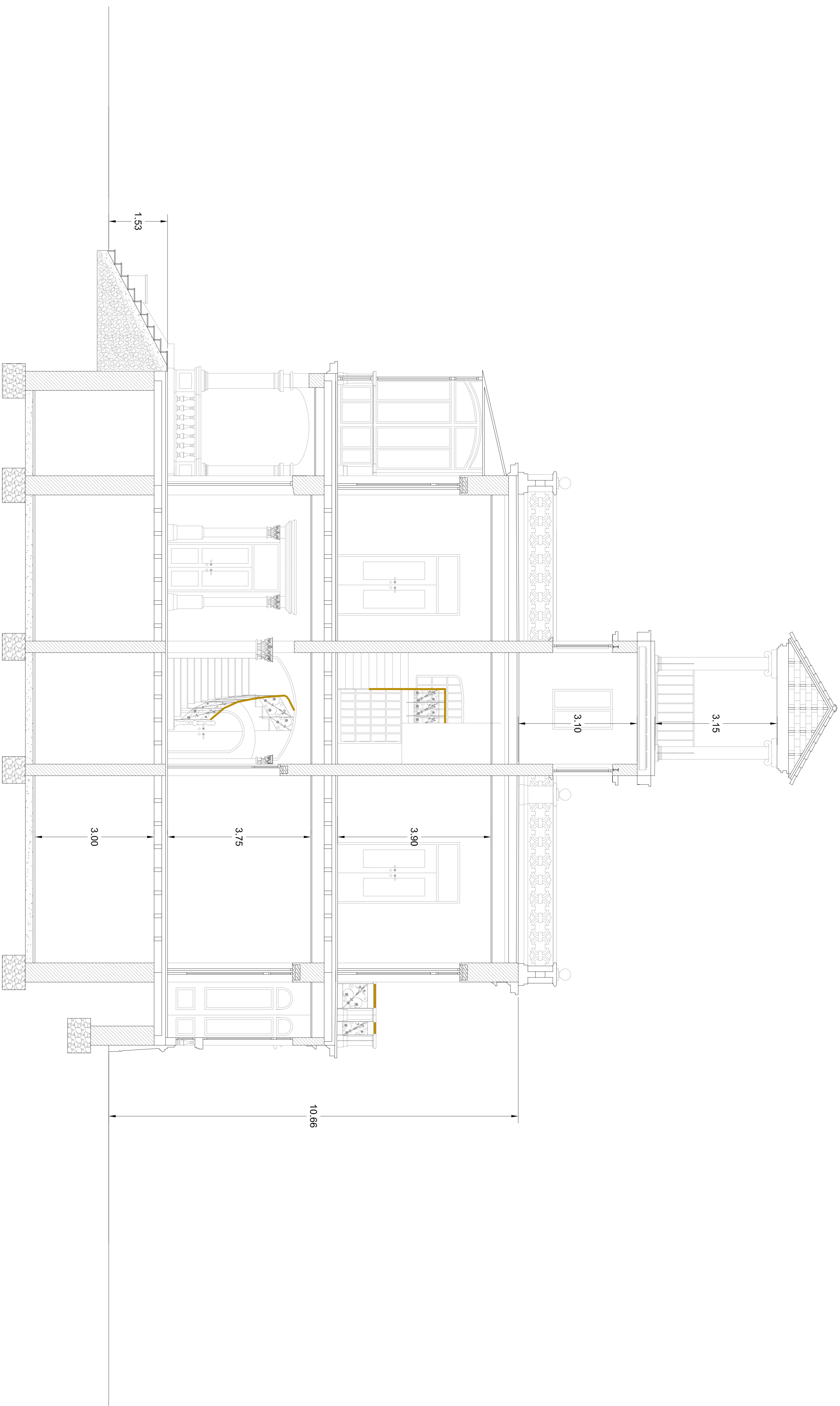
UPCT	DAVID NAVARRO MORENO	PLANO Nº	10
EDIFICIO	VILLA CALAMARI	FECHA	JUN/2007
PLANO	ALZADO SUR	ESCALA	1/50



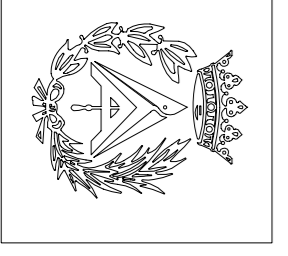


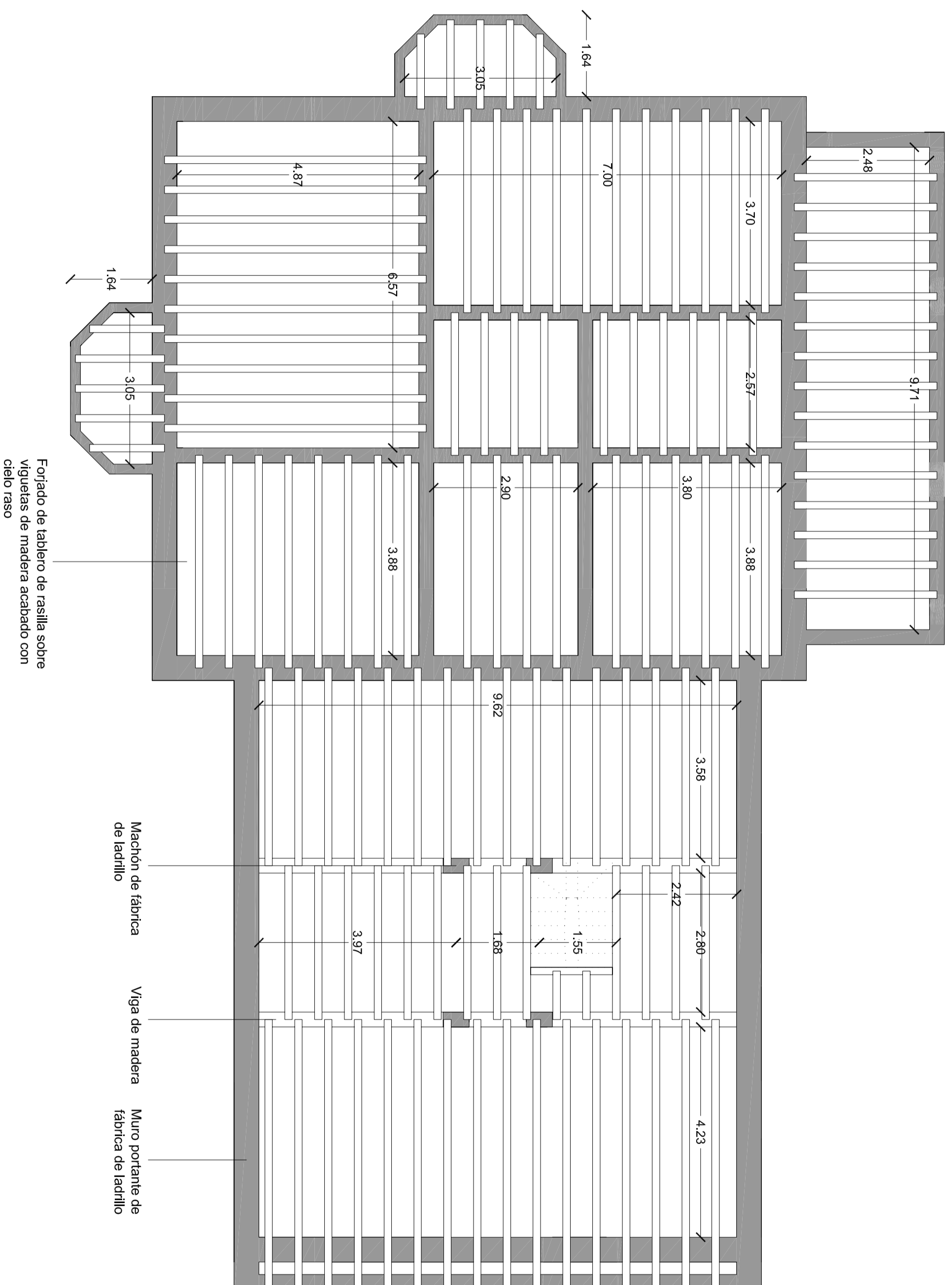
UPCT	DAVID NAVARRO MORENO	PLANO Nº	11
EDIFICIO	VILLA CALAMARI	FECHA	JUN/2007
PLANO	SECCION a	ESCALA	1/50





UPCT	DAVID NAVARRO MORENO	PLANO Nº	12
EDIFICIO	VILLA CALAMARI	FECHA	JUN/2007
PLANO	SECCION b	ESCALA	1/50





UPCT **DAVID NAVARRO MORENO**

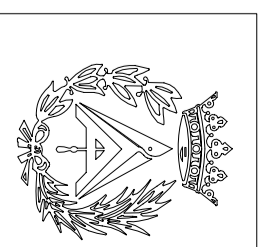
EDIFICIO **VILLA CALAMARI**

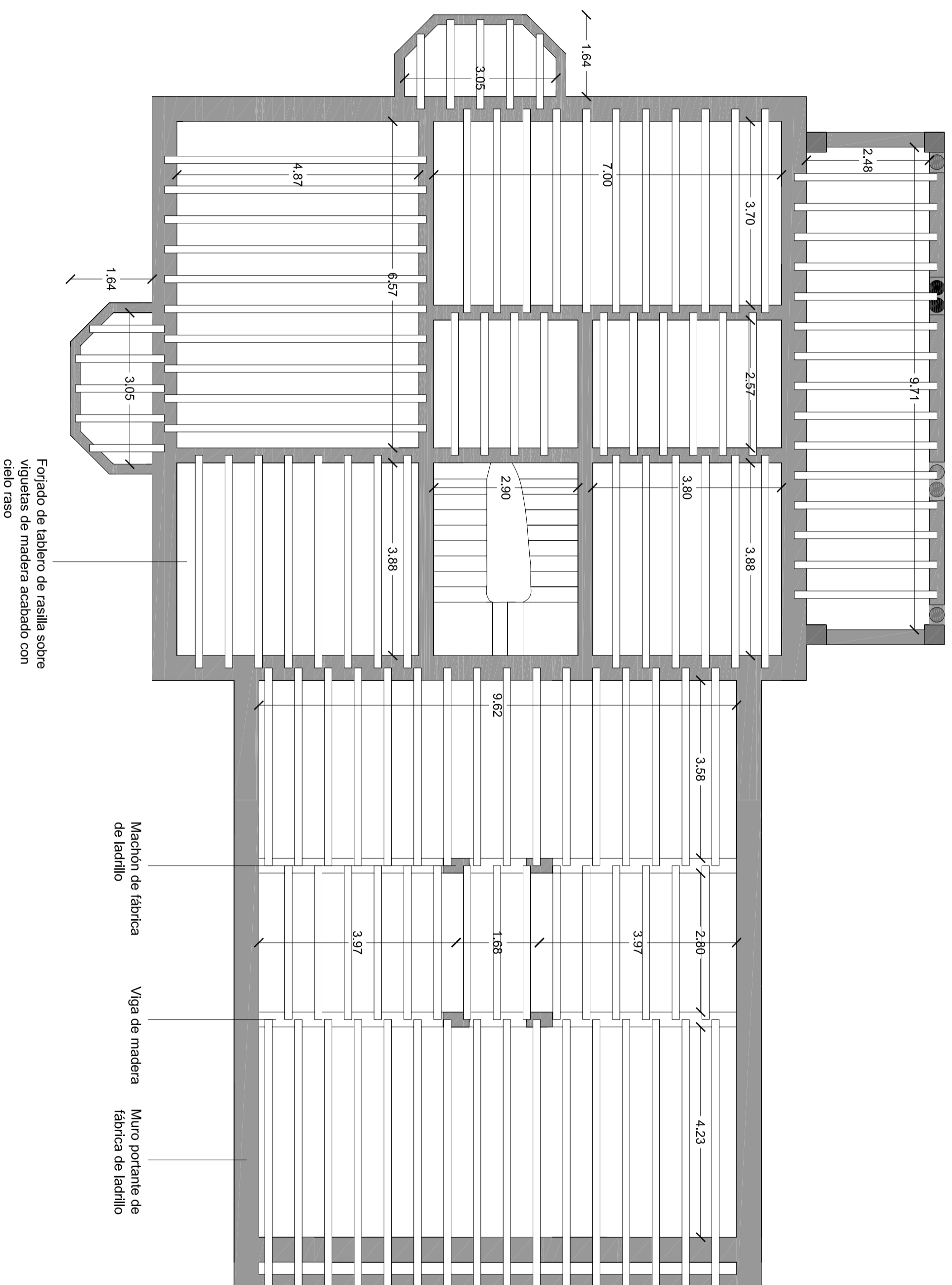
PLANO **ESTRUCTURA. FORJADO 1**

PLANO Nº **13**

FECHA **JUN/2007**

ESCALA **1/75**





UPCT **DAVID NAVARRO MORENO**

EDIFICIO **VILLA CALAMARI**

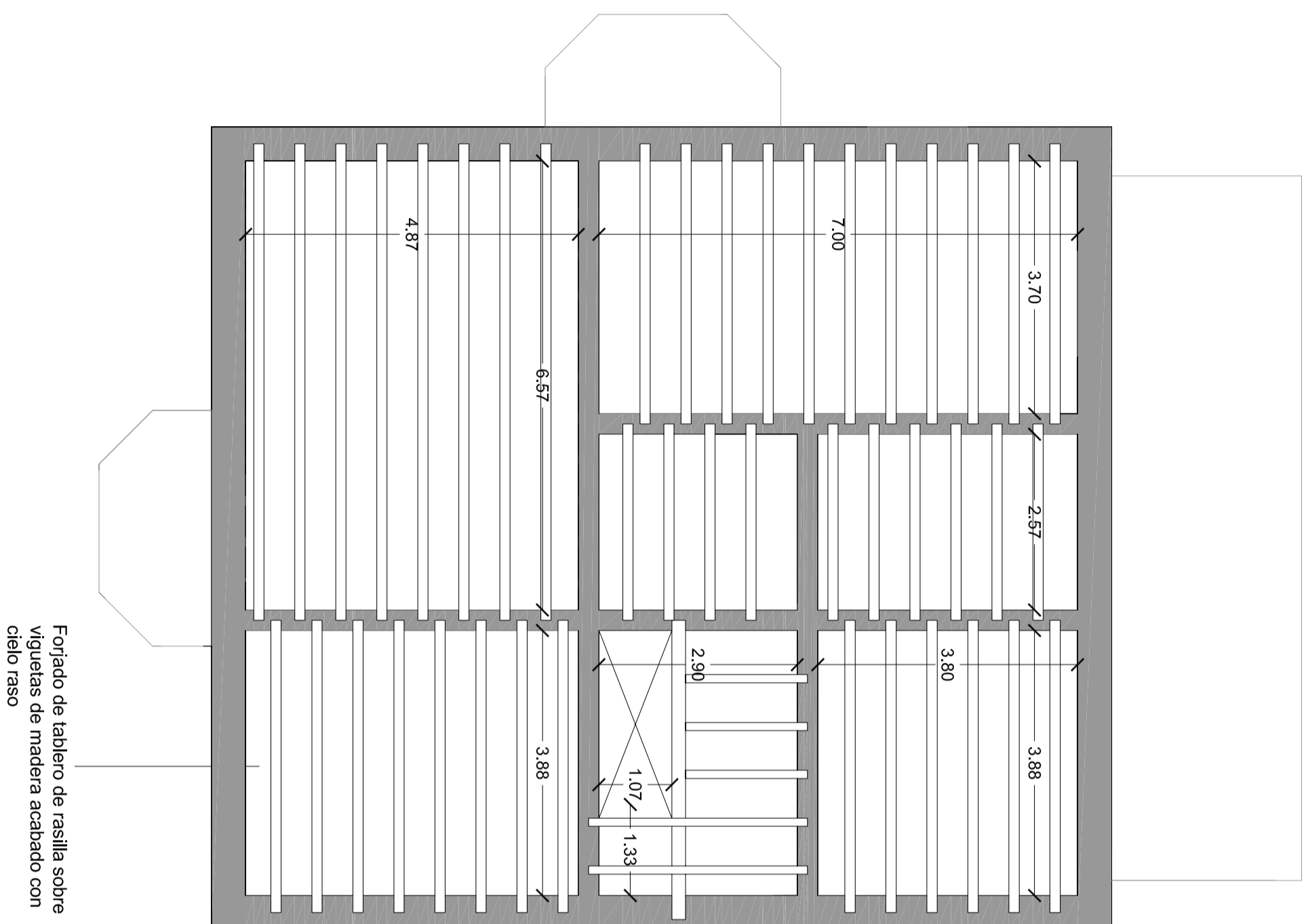
PLANO **ESTRUCTURA. FORJADO 2**

PLANO Nº **14**

FECHA **JUN/2007**

ESCALA **1/75**





UPCT **DAVID NAVARRO MORENO**

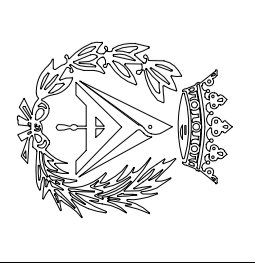
PLANO Nº **15**

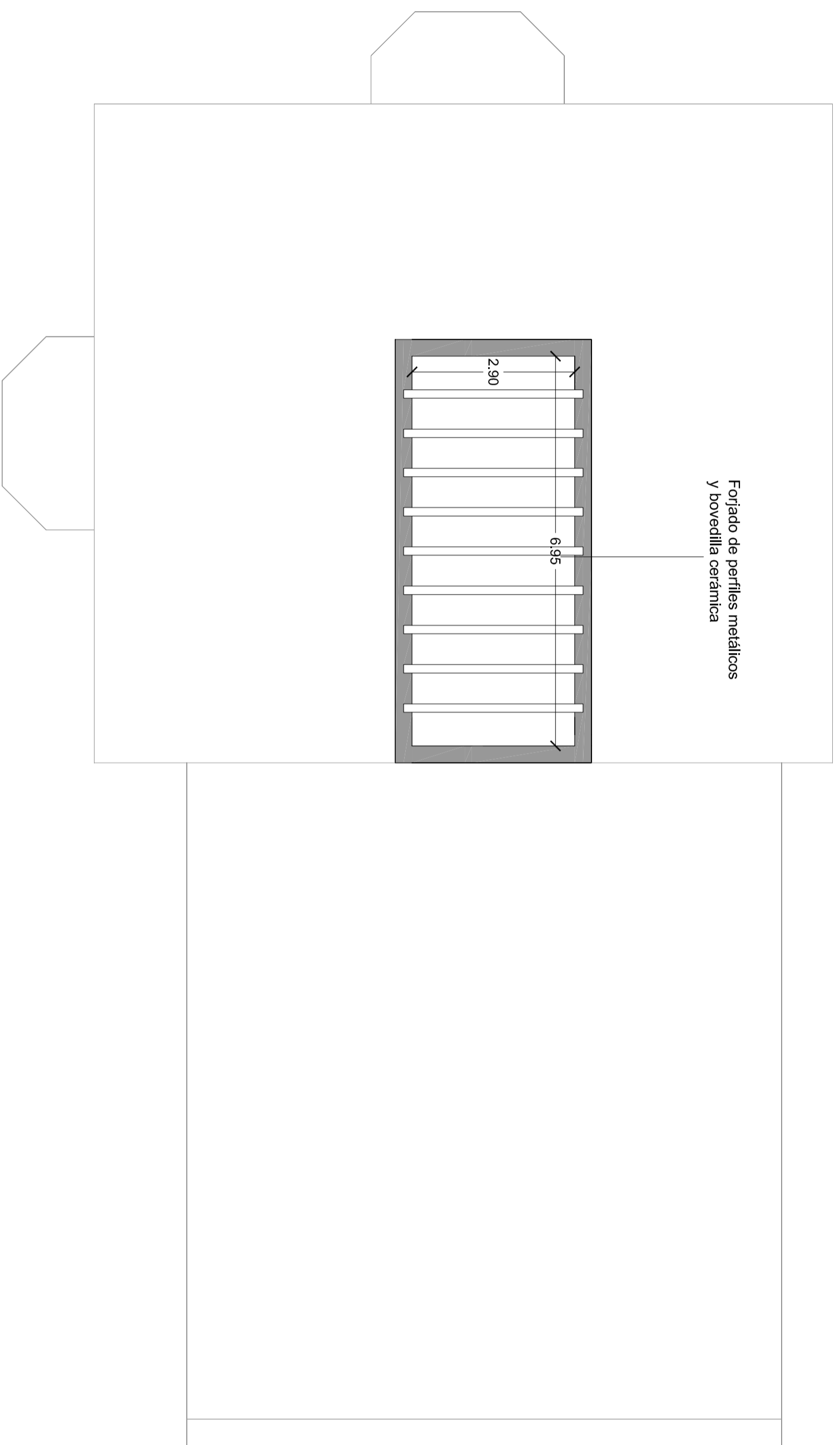
EDIFICIO **VILLA CALAMARI**

FECHA **JUN/2007**

PLANO **ESTRUCTURA. FORJADO 3**

ESCALA **1/75**





UPCT **DAVID NAVARRO MORENO**

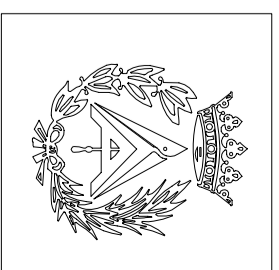
PLANO Nº **16**

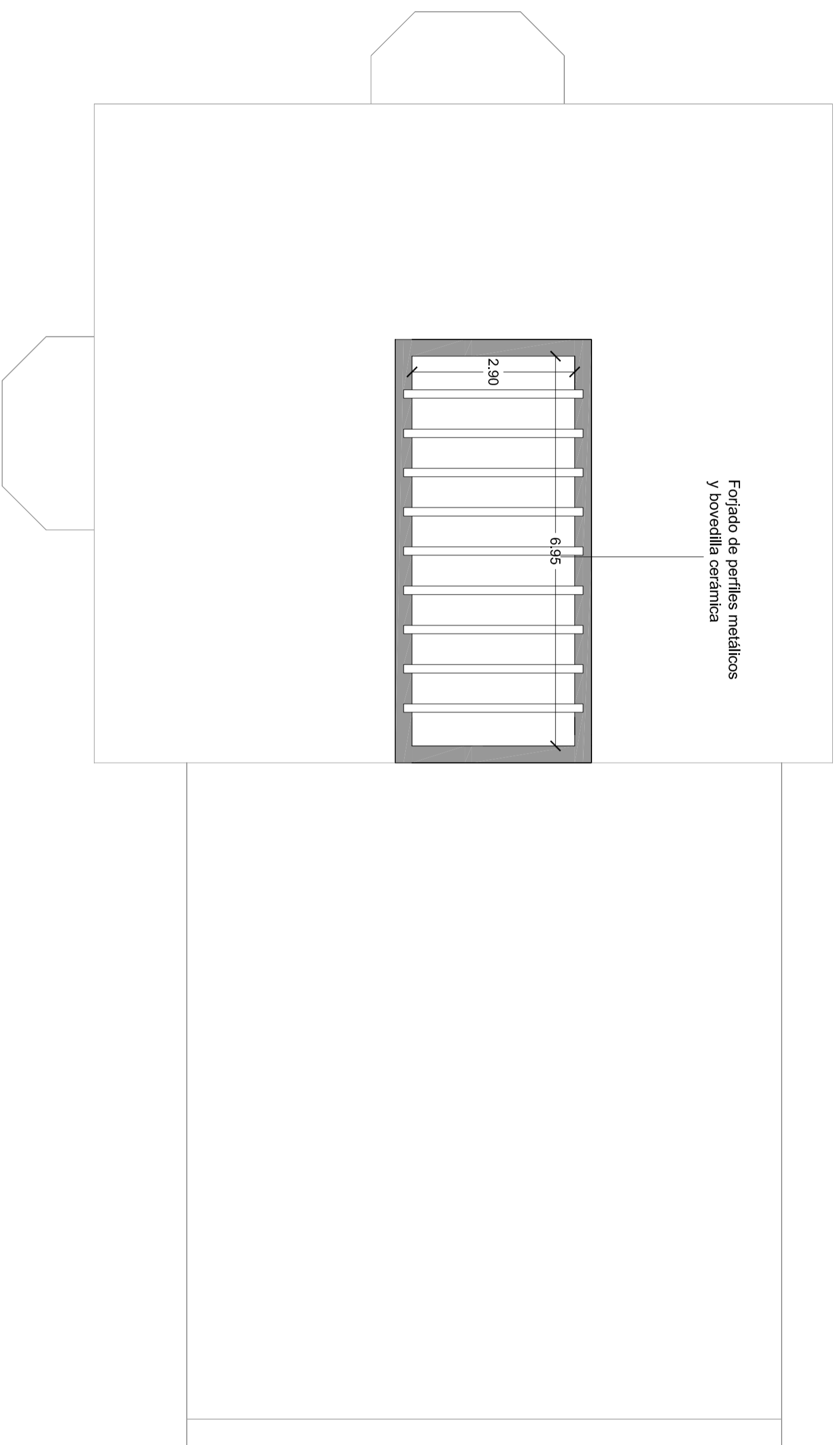
EDIFICIO **VILLA CALAMARI**

FECHA **JUN/2007**

PLANO **ESTRUCTURA. FORJADO 4**

ESCALA **1/75**





UPCT **DAVID NAVARRO MORENO**

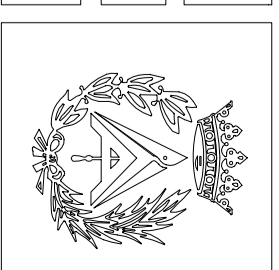
PLANO Nº **17**

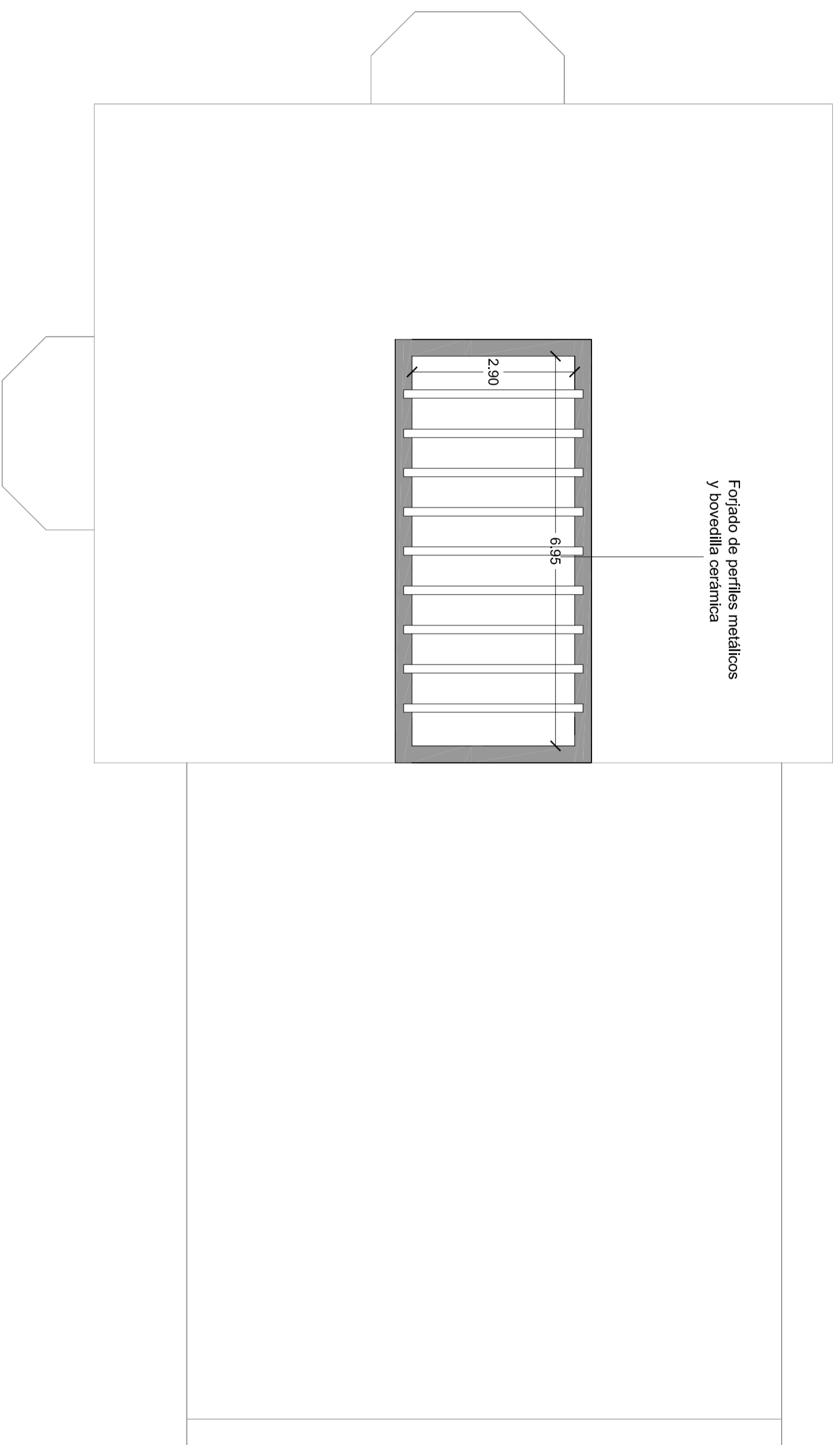
EDIFICIO **VILLA CALAMARI**

FECHA **JUN/2007**

PLANO **ESTRUCTURA. FORJADO 5**

ESCALA **1/75**





UPCT **DAVID NAVARRO MORENO**

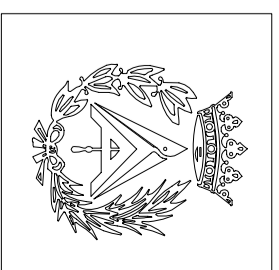
PLANO Nº **18**

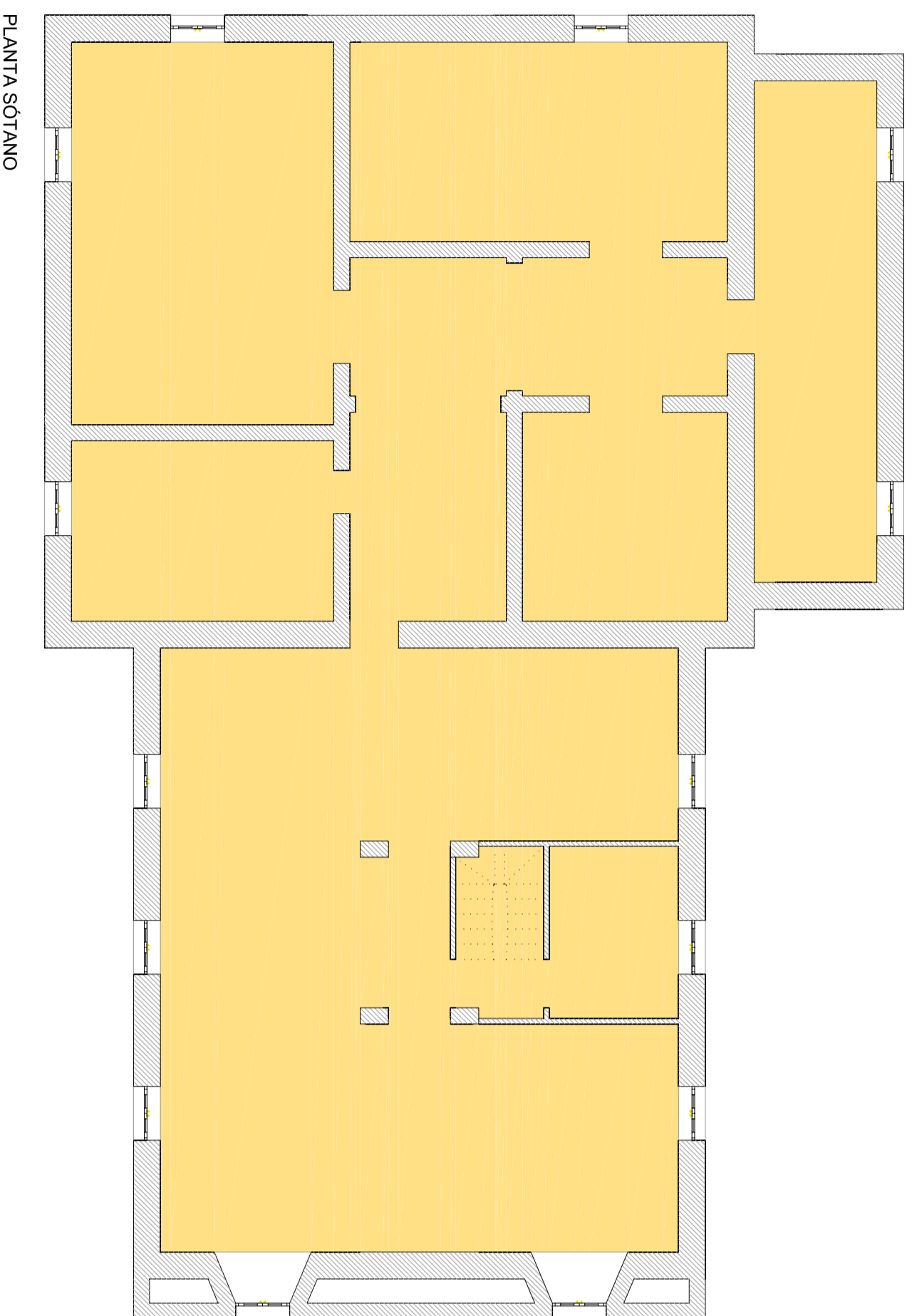
EDIFICIO **VILLA CALAMARI**

FECHA **JUN/2007**

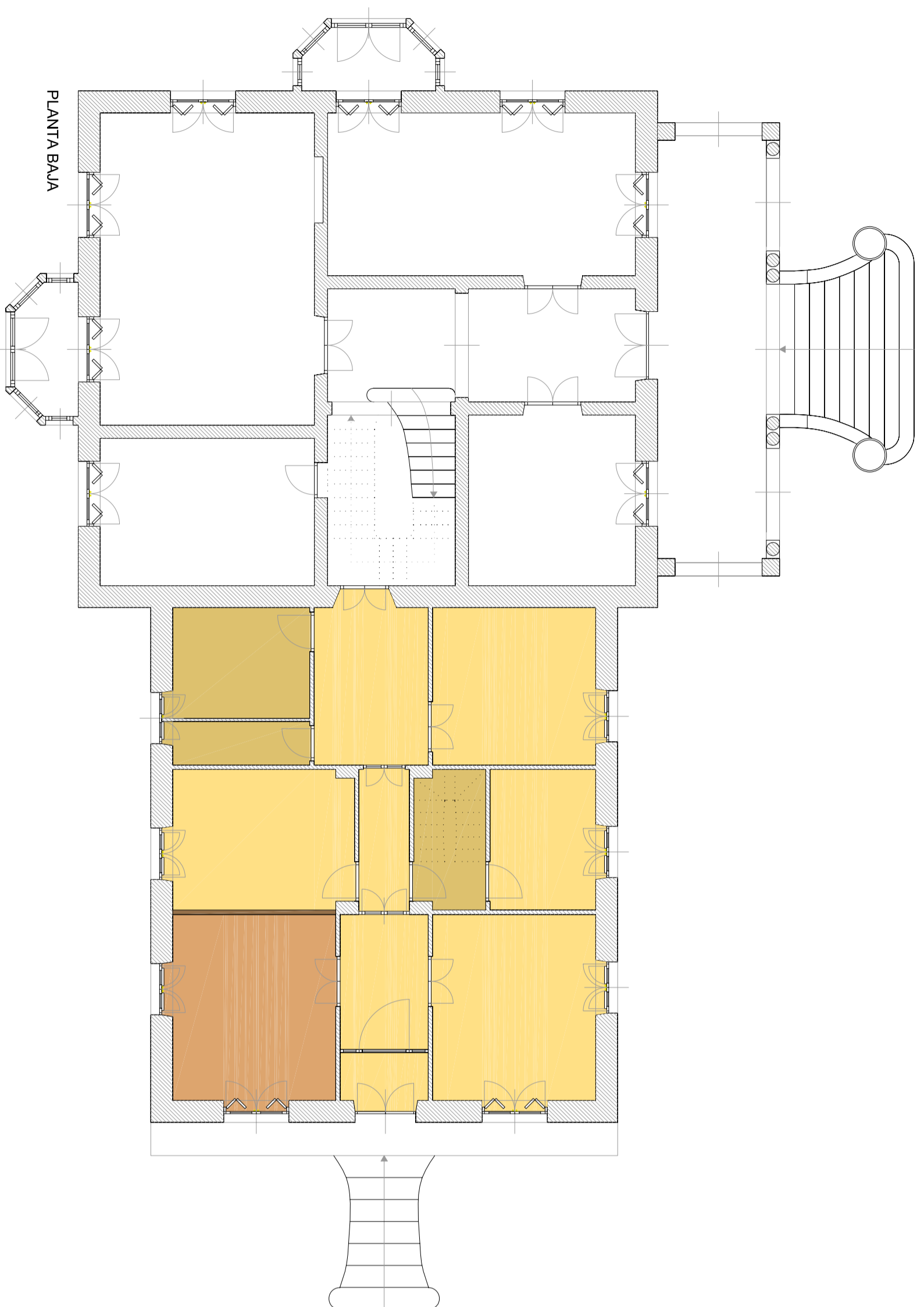
PLANO **ESTRUCTURA. FORJADO 6**

ESCALA **1/75**





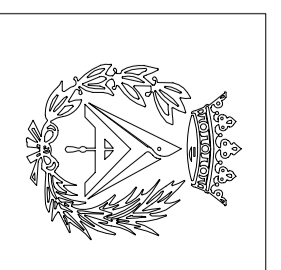
PLANTA SOTANO

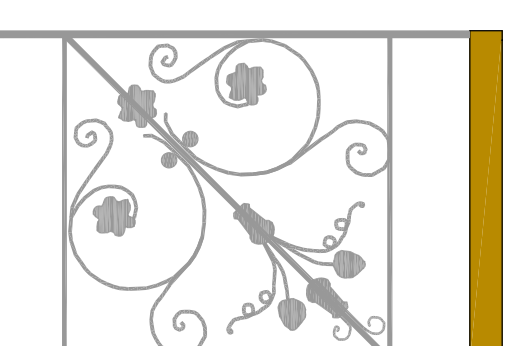
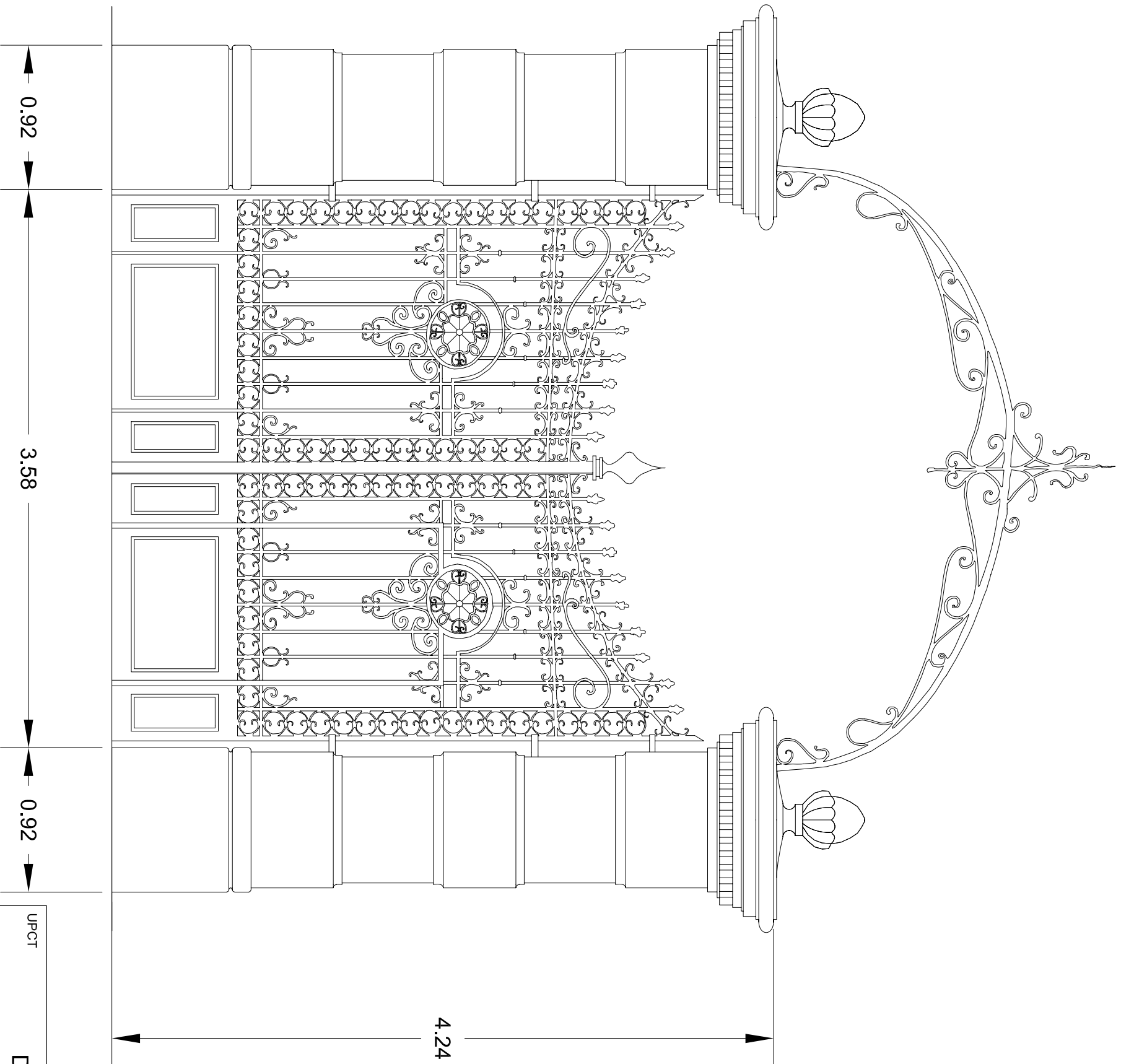


PLANTA BAJA

- ZONA AFECTADA POR LOS INCENDIOS
- FORJADO DERRUMBADO
- CIELO RASO PARCIALMENTE DESPRENDIDO
- TABIQUE PARCIALMENTE DESTRUIDO

UPCT	DAVID NAVARRO MORENO	PLANO Nº	19
EDIFICIO	VILLA CALAMARI	FECHA	JUN/2007
PLANO	ESTADO ACTUAL PLANTA BAJA	ESCALA	1/100





MOTIVO ORNAMENTAL DE LA
CERRAJERÍA. ESCALA: 1/15

PUERTA DE ACCESO. ESCALA: 1/30

UPCT	DAVID NAVARRO MORENO	PLANO Nº	20	
EDIFICIO	VILLA CALAMARI	FECHA	JUN/2007	
PLANO	CERRAJERÍA	ESCALA	VARIAS	